

Artwork Specification – Tex-Flex Tunnel

Artwork should be provided as a high resolution PDF to the following specification

- CMYK colour profile
- Vector format/ 300dpi or higher
- Text outlined
- Images linked/embedded
- Layers flattened

No bleed or crop marks required

Artwork should be supplied at full size

Outside 1 & 4 Artwork Size: 2420mm (W) x 4560mm (H) | Outside 2 & 3 Artwork Size: 2550mm (W) x 5050mm (H)
Inside 1 & 4 Artwork Size: 2420mm (W) x 4560mm (H) | Inside 2 & 3 Artwork Size: 2550mm (W) x 5050mm (H)

Delete all the cutout lines and check the secure area. The Guidelines on the artwork template contain:
[project line](#), [shape line](#) and [secure line](#).

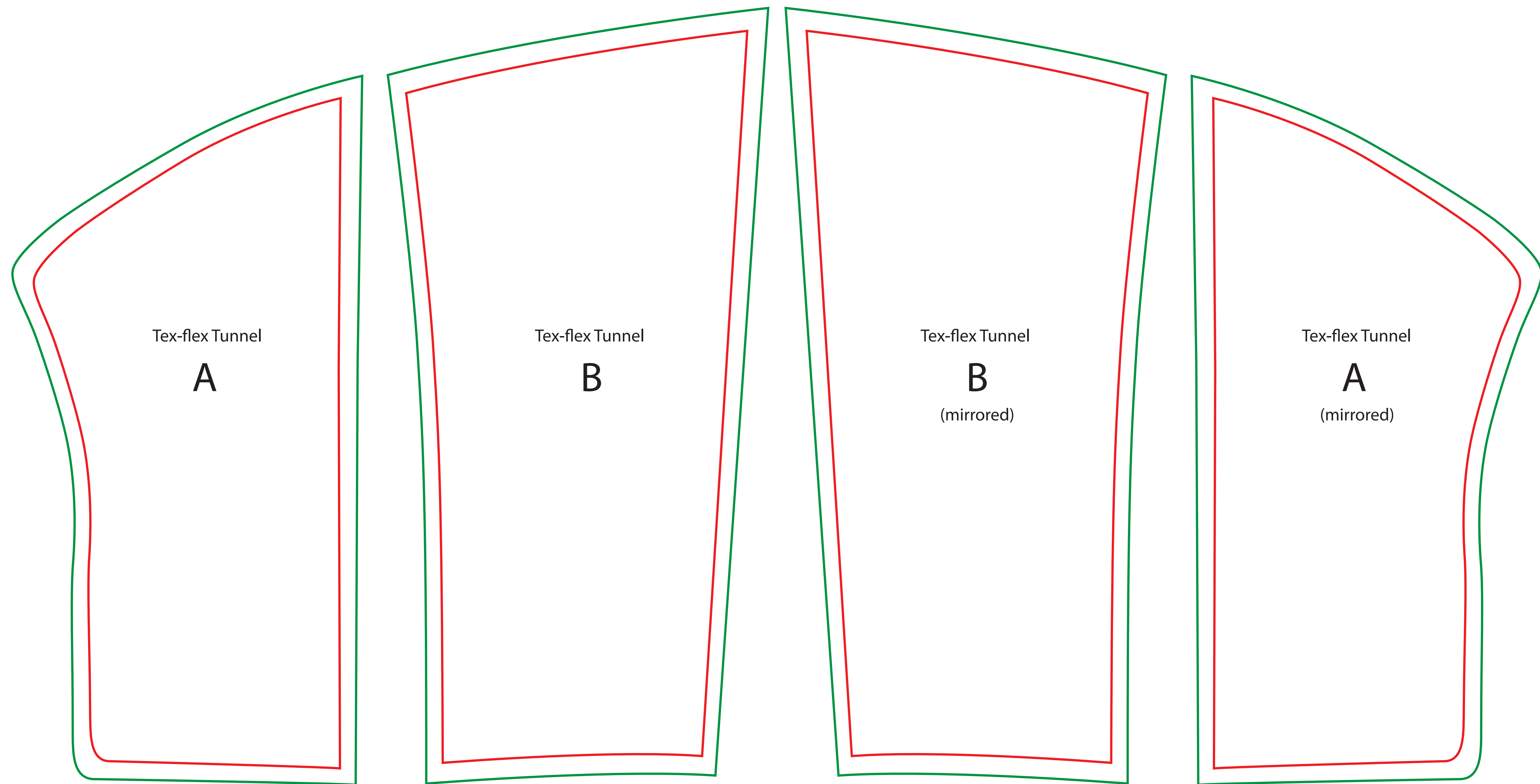
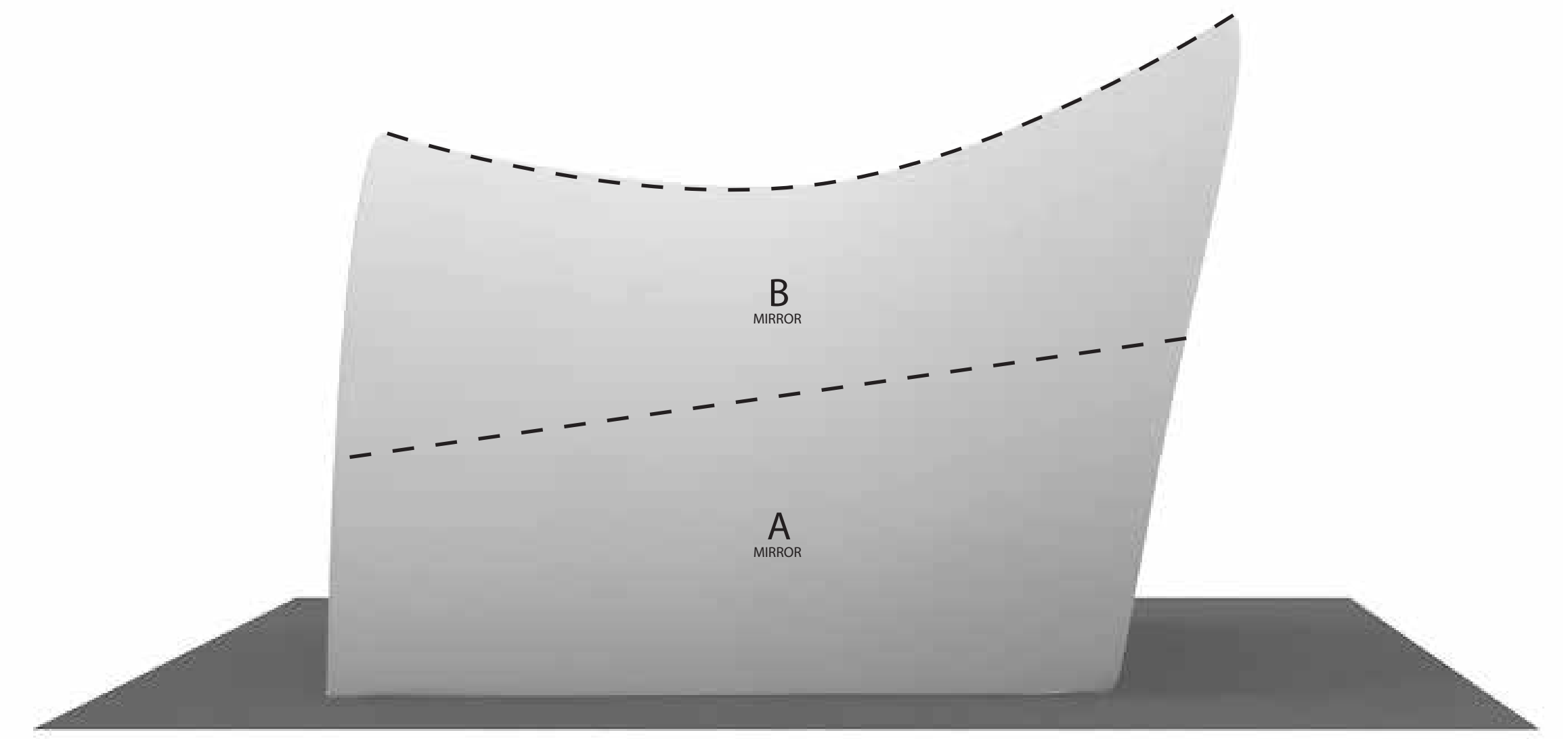
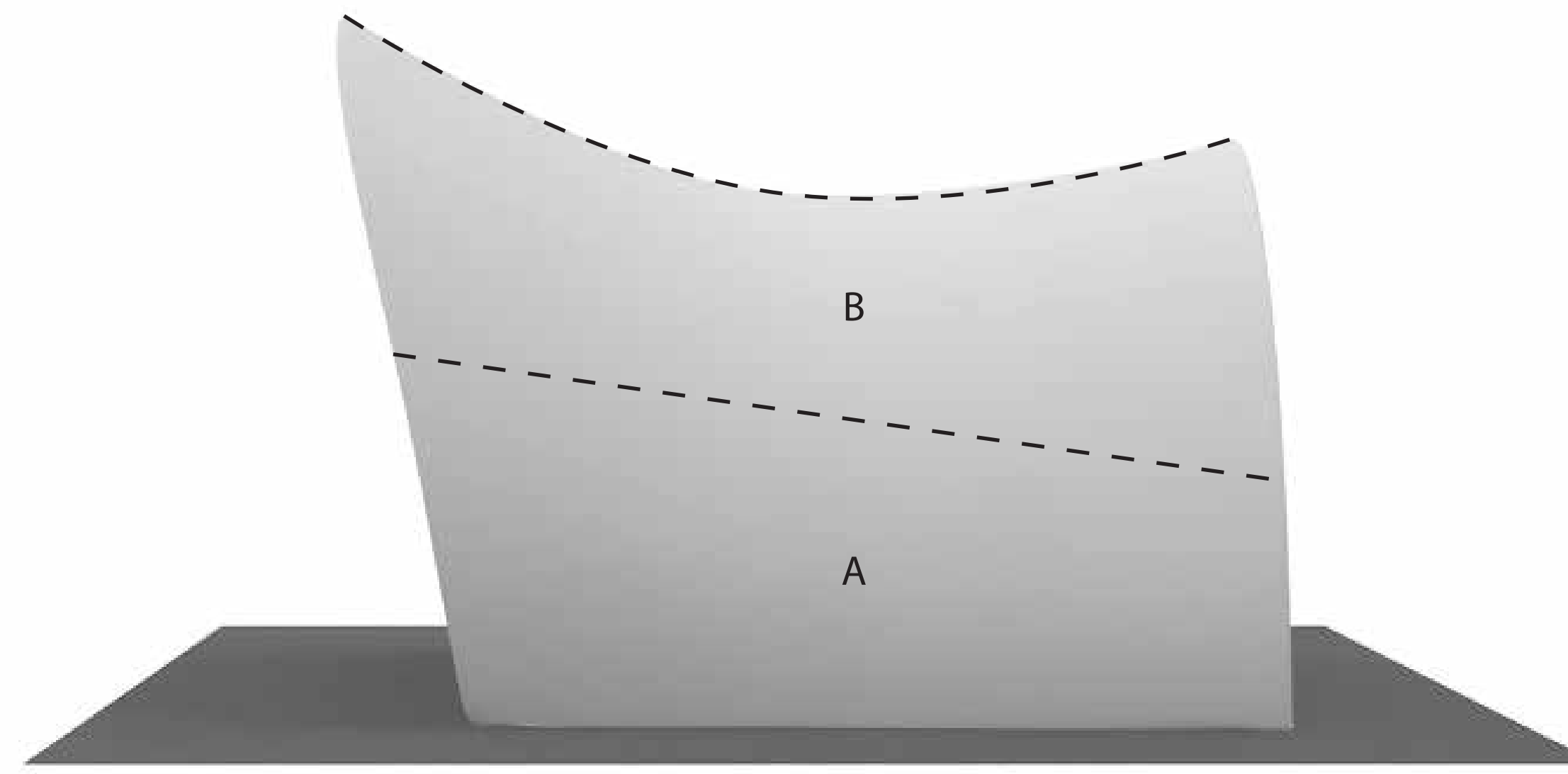
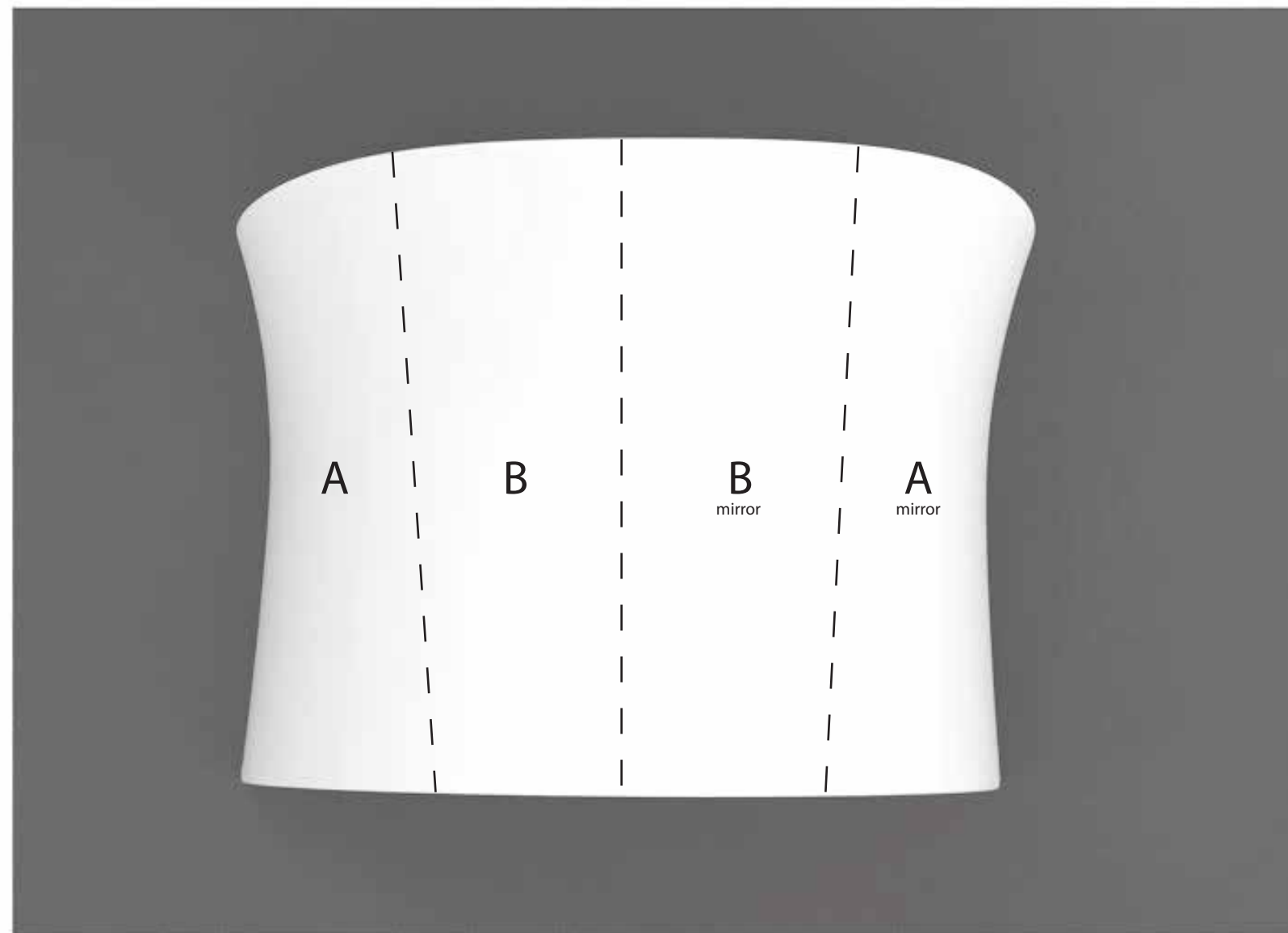
All major elements should be kept inside the [secure line](#), while the background and graphic should fill to the [project line](#).

The file name should look like:

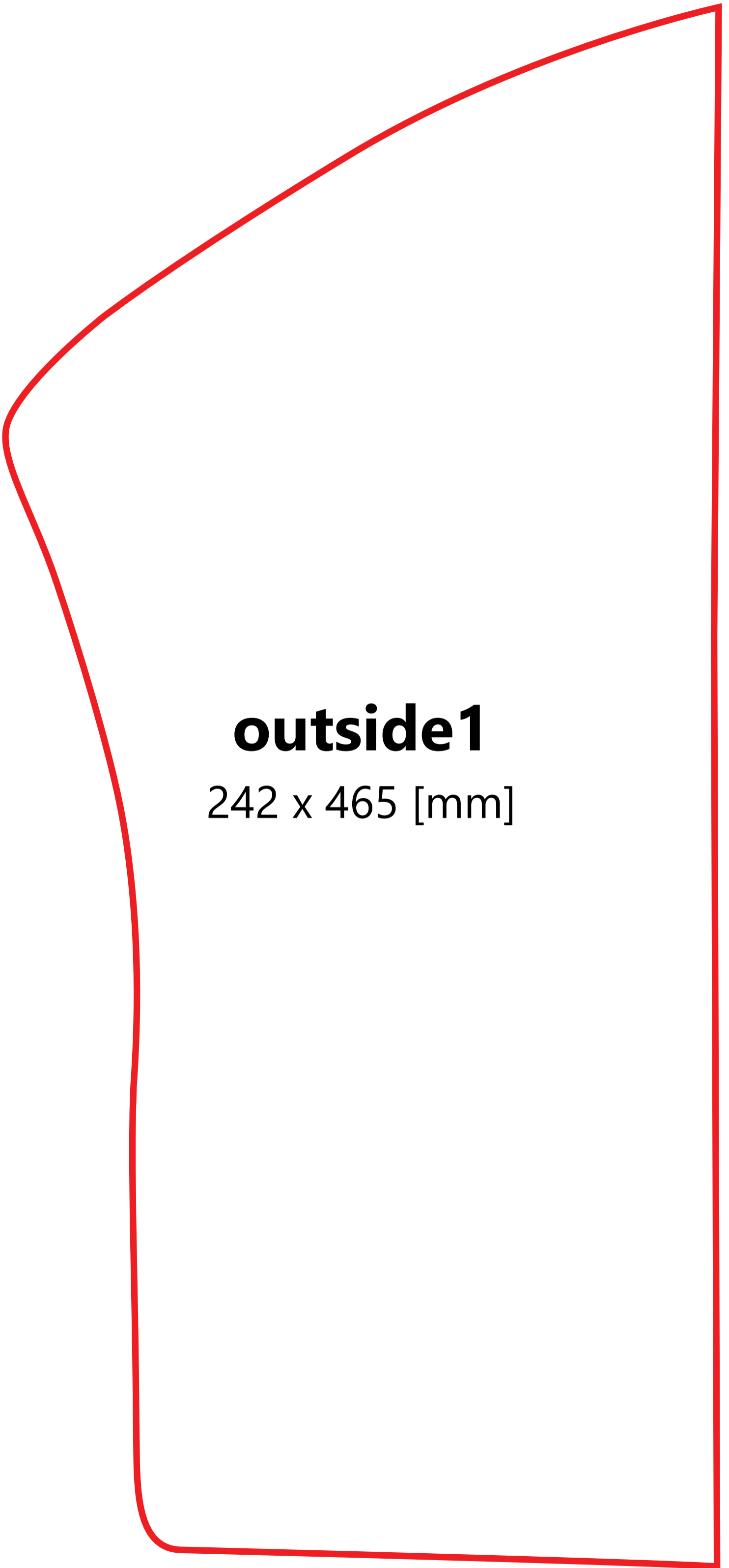
SYSTEMNAME_FRONT/BACK_DIMENSIONS

[Watch our 'how to design artwork' video here](#)





ATTENTION! THERE IS NO POSSIBILITY TO MATCH THE ELEMENTS LIKE LOGOTYPE OR TEXT ON THE SEWING LINES(DASHED LINE). PLEASE CONSIDER THIS WHILE DESIGNING GRAPHICS!



outside1

242 x 465 [mm]



outside2

255 x 505 [mm]



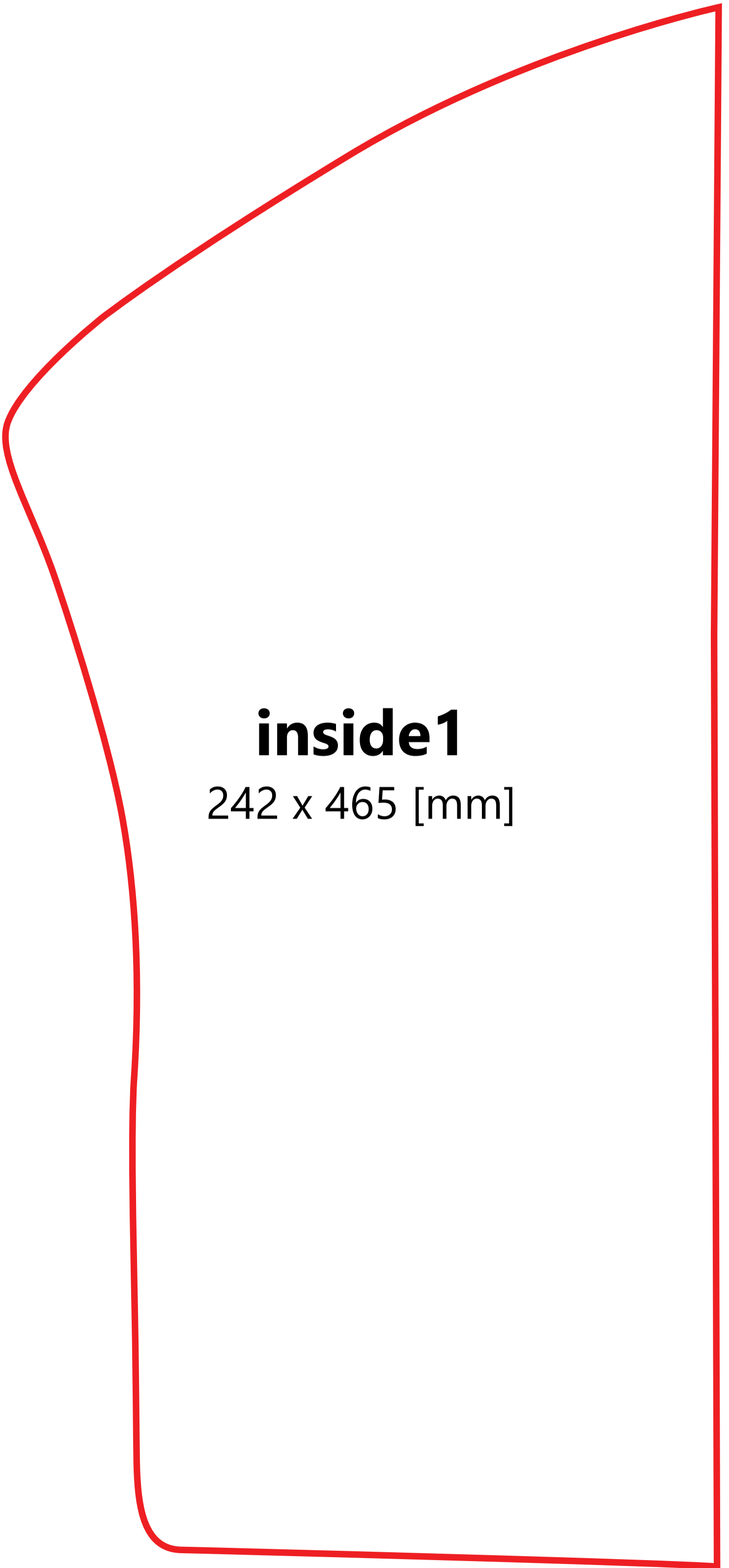
outside3

255 x 505 [mm]



outside4

242 x 465 [mm]



inside1

242 x 465 [mm]



inside2

255 x 505 [mm]



inside3

255 x 505 [mm]



inside4

242 x 465 [mm]